



THE LATIN PATRIARCHATE  
OF JERUSALEM

## PROJECT ROPOSAL

HUMANITARIAN AND EMERGENCY RELIEF AID FUND

DIOCESE



GENERAL ADMINISTRATION  
PROJECT DEVELOPMENT OFFICE  
FEBRUARY 2021



## PROGRAM I: SCHOOLS AND UNIVERSITY SUPPORT

The Schools and University Support Program aims at helping students from low-income and impoverished families by paying part of their university or school tuition fees. Because education is one of the strongest means that is capable of bringing about the desired change in society and is helpful in developing a generation of virtuous individuals, The LPJ believes that the scholarship program is one of its most important social aid projects. Every year hundreds of students are assisted through grants that range from EUR 500 to EUR 2000 per student for university assistance.



## PROGRAM II: FAMILY SUPPORT PROGRAM



The Family Support Program works with people, families and communities to promote and provide support in the different aspects of life. Through this program, the LPJ covers rents, overdue debts, utility bills like electricity and water, land-taxes and emergency financial aids for families in Jerusalem, the West Bank and Gaza Strip. Every year hundreds of families are assisted through grants that range from EUR 200 to EUR 1500 per family.

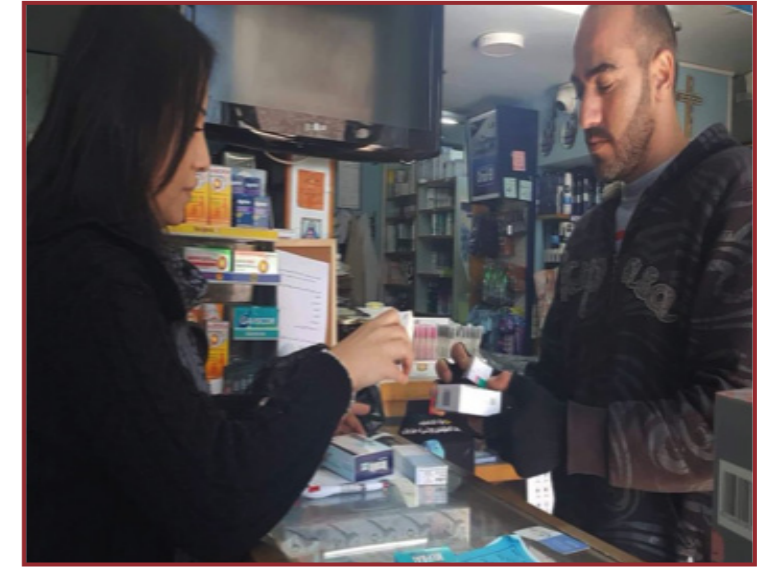
## PROGRAM III: MEDICAL SUPPORT PROGRAM

The Medical Support Program assists marginalized poor individuals suffering from chronic diseases and in need of urgent medical interventions and not have any medical insurance such as heart problems, kidney failures, Cancer etc. In some cases, the cost is very high and the Latin Patriarchate coordinates with some other local NGOs in order to cover the expenses. Every year tens of individuals are assisted through grants that range from EUR 300 to EUR 2500 per case.



## PROGRAM IV: MEDICINE PROGRAM

The Medicine Support Program is another service that is provided to the needy and marginalized Christian families in the Holy Land targeting mostly the elderly who have no insurance coverage, many have been abandoned by their families due to immigration or the high cost of living. Expensive medications were given to patients every month particularly for those patients with chronic illnesses and for those who have had the disease for a long time. Every year tens of elderly are assisted through grants that range from EUR 50 to EUR 300 per elderly.



The medicine program serves patients from different areas: The Holy Family church of Ramallah, Ramallah Elderly Day Care Center, Jericho, Birzeit, Taybeh, Notre Dame des Dolores, Aboud, Zababdeh, Rafidia Bethlehem, Beit Jala, Beit Sahour and some cases in Jerusalem.

## PROGRAM V: EAST JERUSALEM AID SUPPORT PROGRAM



This project is one of the important projects implemented by the LPJ in cooperation with the Society of St. Yves (The Catholic Centre for Human Rights) and Caritas Jerusalem. The project has important social and legal components that geographically targets Christian families living in East Jerusalem who are caught in the politics of the city and the Israeli racist policies. Because of its special status and needs among the Palestinian residents especially the Christians, this project came about to support

both individuals and families who are living through the different challenges related to the protection of their social rights. This program is very essential in the Holy Land especially Jerusalem because it saves the families from eviction or imprisonment. While Jerusalem has almost 800,000 residents, more than one third of those are Palestinians where almost less than 10,000 are Christian.

Each within their expertise, beneficiaries have received the help within their need and capacity. While the LPJ manages the project, the Society of St. Yves provided legal aid (advice and intervention) to the beneficiaries and Caritas Jerusalem provided the social and vulnerability screening of the cases. Tens of families are assisted every year through grants that range from about EUR 300 to EUR 3,000 per family.



## PROGRAM VI: IRAQI CHRISTIAN REFUGEE HUMANITARIAN AID PROGRAM

Since their arrival to Jordan in August 2014, Iraqi Christians were living in improvised church premises, halls or caravans. The Latin Patriarchate of Jerusalem has been helping them unconditionally by paying their accommodations, utilities, medical health and transportation costs. The most essential fields of support for the refugees are: first, the educational support – school fees for 1,100 students, transportation for 745 students, book fees for 1,100 students, uniform fees 1100 students, education informal 300 students, life skill trainings for 450 students. Moreover, the LPJ provided around 11,235 displaced Iraqi families with humanitarian support, such as: cash money, food, clothes, shelter, water, medicine, hospital fees, transportation, etc.



*Iraqi Christian Refugee' Family, Jordan 2016*

Displaced Iraqis lack income and livelihoods and most of their children have missed education until the beginning of this scholastic year when benevolent schools secured their education with the assistance of church funds. The Government of Jordan has granted Iraqi refugees in urban settings access to basic public services such as health and education, but the capacity of the government to assist is being exhausted.

The Latin Patriarchate of Jerusalem together with Caritas Jordan and hundreds of volunteers, contributed by supervising and coordinating the activities held for the Iraqi refugees with the aim of expressing solidarity and alleviating their suffering. Thousands of such families have been assisted through grants if amount EUR 500 per month.

## PROGRAM VII: CREATING JOB OPPORTUNITIES FOR CHRISTIAN YOUTH IN GAZA



*Mareena Issa Tarazi - Dentist at the Near East Council of Churches -NECC - 2020*

Young Christian Gazans are seeking employment opportunities to escape the clutches of poverty by all means available. They are enduring exceptional economic, political circumstances and discrimination on basis of religion that makes them fail to find employment opportunities in the local market.

In 2018 till today, the Holy Family Church in Gaza in cooperation with LPJ, were able to provide employment opportunities to a total of **63 Christian** youth who were seeking employment in

Gaza for a specific period of time ranging from 12 to 27 months depending on funding available and contributions from the hiring institutions. The candidates were chosen after a call for applications that was launched through the Churches and the Holy Family Church's networks in Gaza focusing on the capabilities and qualifications of the youth themselves and work on providing job opportunities that matches their skills and future aspirations. This opportunity has helped the youth to gain work experiences and life skills, which will allow them to stand out to future potential employers when the program ends. Through the project, the youth received life skills training and general capacity building workshops on the jobs they are performing.



*Capacity Building for the Beneficiaries of Gaza Job Creation Project, January 2020*

The needs in Gaza are enormous and the youths strive to secure the basic needs of life for their children and families. They are seeking employment opportunities to escape the clutches of poverty by all means available. They are enduring exceptional economic, political circumstances and discrimination on the basis of religion that makes them fail to find employment opportunities in the local market. The Latin Patriarchate aims to provide assistance to all of them and give them a chance to gain money in a dignified manner and improve their skills by expanding the program in the near future.



*Some of the beneficiaries of the Gaza Job Creation project with the parish priest at the Latin Parish, 2020*

## BUDGET

The financial division between these activities will be determined by the Consultors and Bishops Councils, and that the full budget for 2021 is **USD 1,000,000**.





LATIN PATRIARCHATE  
OF JERUSALEM

**Sami El-Yousef**  
Chief Executive Officer

General Administration Office  
Jaffa Gate, P.O. Box 14152  
Jerusalem 9114101  
Tel. + 972 2 6282323  
E-mail: [ceo@lpj.org](mailto:ceo@lpj.org)  
[www.lpj.org](http://www.lpj.org)

